

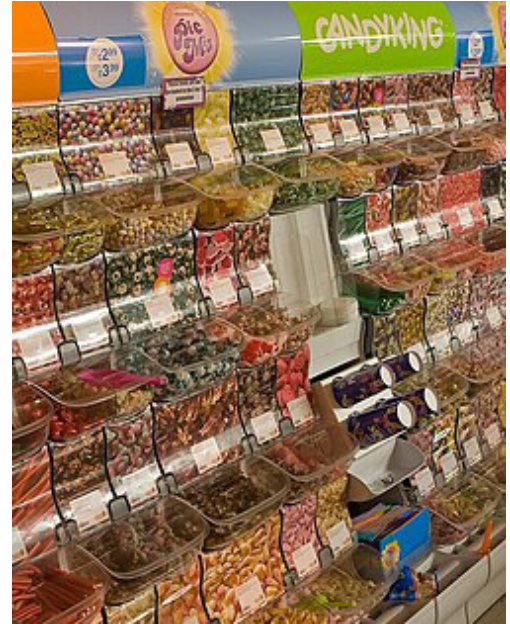


THE Living Memory Association NEWSLETTER

'What were your favourite sweeties?'

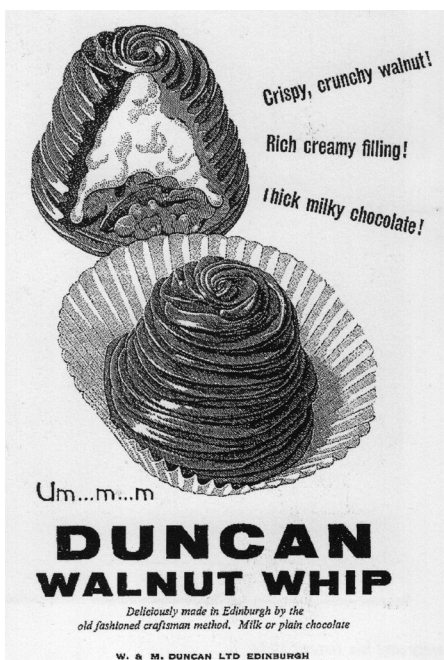


Woolworth's store on Princes Street, 1957.



Woolworth's was famous for its Pic'n'Mix selection of sweeties.

Follow this link to hear people's stories about their favourite sweeties.
<https://thelivingmemoryassociation.libsyn.com/sweeties>

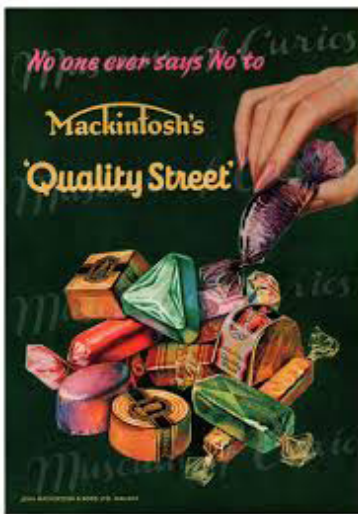


Duncan's was famous for creating the Walnut Whip. There was a factory in Beaverhall Road near Powderhall.

The photo on the right shows some of the factory workers.



Husband and wife shopkeepers at the counter of their shop Scott's at Polwarth Gardens in 1988.



Popular sweetsies

- Fruit Gums
- Spangles
- Sherbert Dabs
- Toffee Doodles
- Soor Plooms
- Penny Chews
- Berwick Cockles
- Lucky Tatties
- Wine Gums
- Dolly Mixtures
- Penny Dainties
- Smarties
- Fruit Pastels
- Jelly Babies
- Parma Violets
- Lees Macaroon Bars
- 'Lees, Lees more if you please...'*





On a Friday you maybe got thruppence and you'd go to the shop and gaze in the window at the toffee doddles, penny dainties and alphabet sweets, trying to make up your mind what would last the longest, says George McGhee.





Jeannie Veitche's sweetie shop was at East Crosscauseway. You could get toffee apples, boilings and fudge, says Jim Ward.

Casey's made their own sweeties and chocolates. The shop was jam-packed with hundreds of jars of sweeties, says Evelyn Munroe.



Mr Whippy's soft-serve ice cream arrived in Scotland in the early 1960s in the distinctive pink and white vans. Mr Whippy vans used the Greensleeves tune to announce that they were in your neighbourhood.



Do you have memories, stories, or photos you'd like to share? Please get in touch: comhist@gmail.com

07714783726

 facebook [livingmemoryassociation](https://www.facebook.com/livingmemoryassociation)

 instagram [thelmascotland](https://www.instagram.com/thelmascotland)

 twitter/X [thelmascotland](https://twitter.com/thelmascotland)



The Wee Museum of Memory
 10.30am – 4pm Mon – Fri
 11am – 4pm Sat/Sun
 1st floor, Ocean Terminal.
 We are open to visitors.
www.livingmemory.org.uk