



THE Living Memory Association NEWSLETTER

'Do you remember your first car?'



'My Dad pictured at the steering wheel of our car and me in the back of the car looking out the window. This is possibly a version of a 1936/37 Wolseley 10/40, with a starting handle supplied, as the car needed cranking to start it,' says Alastair Forbes.

This photo was taken in the Dean Village. The car is a Ford Anglia.

The Ford Anglia was the first car to have a back window which sloped inwards so that if it rained you could see clearly out the back.



A young man in a cadet uniform behind the wheel of a BSA three-wheeled car in Thirlestane Lane, 1955.

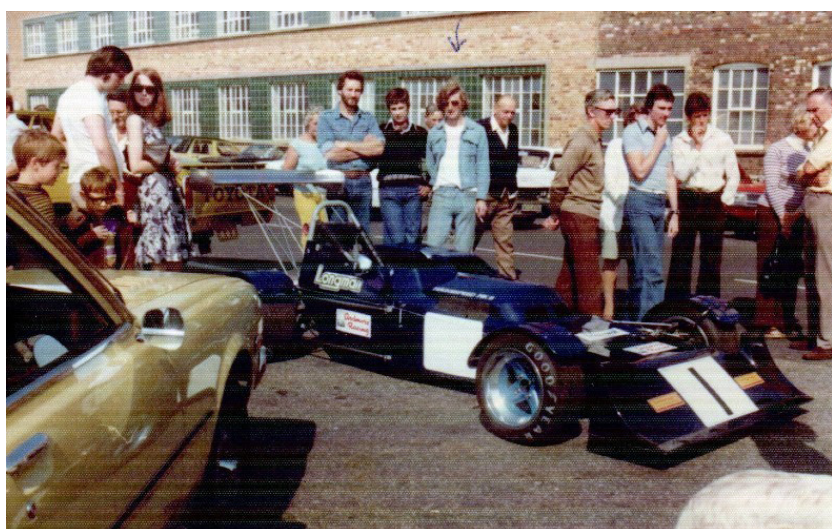
The BSA factory was bombed during the 2nd World War and never re-opened after the war.



This is a photo of a Heinz promotion in which a lucky customer could win a Mini car. The promotion took place at the Leith Provident Co-operative Store in North Fort Street, 1965.

Tom Legget in his Singer Le Mans racing car, talking to the actress Jean Kent in 1955.

Photo courtesy of Edinburgh Collected.



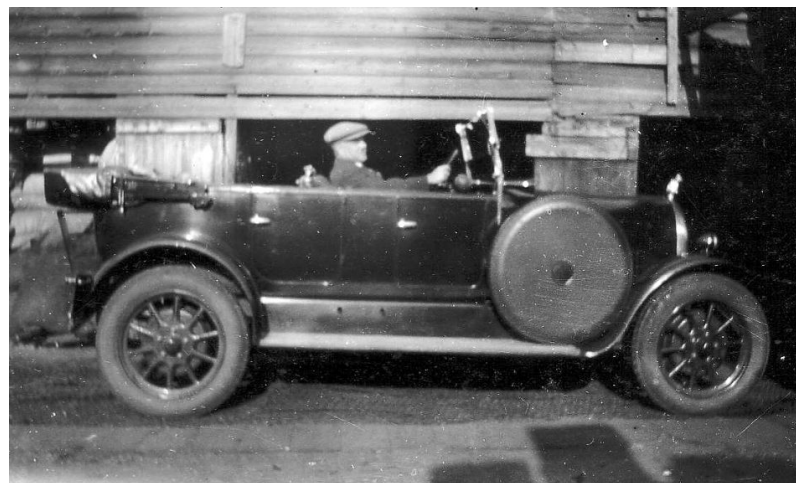
‘My brother Robert in the denim jacket is admiring the racing car. This photo was taken at Brands Hatch,’ says David Le Sueur.



A couple standing by their car on a day trip out to Holyrood Park in 1975. Their car is a black Morris Minor. The car in the background is also a Morris Minor.

John Hackland behind the wheel of a car. The photo was taken in Newhaven Place in 1928.

‘The car was a Bean. My faither couldnae drive, but he was kidding he could,’ says George Hackland.



A boy sitting in the driver’s seat of a Ford Popular car in his father’s motor business at Royal Park Place, 1968.



Ford produced small family cars such as the Ford Prefect, Ford Popular and Ford Anglia.



Scalextric was launched in 1957. Cars ran on grooves and picked up an electric current from beneath the groove. It was an immediate success with demand quickly exceeding the availability of the toy. This set is part of the collection of the Museum of Childhood.



A young boy in a pedal car. This photo was taken on Pentland Place in 1932.



A young man at the wheel of his Ford Cortina 1600 E in 1976.



Do you have memories, stories, or photos you'd like to share?

Please get in touch:

comhist@gmail.com

07714783726

facebook livingmemoryassociation

instagram thelmascotland

twitter/X thelmascotland



The Wee Museum of Memory
10.30am – 4pm Mon – Fri
11am – 4pm Sat/Sun
1st floor, Ocean Terminal.
We are open to visitors.
www.livingmemory.org.uk