



THE Living Memory Association NEWSLETTER

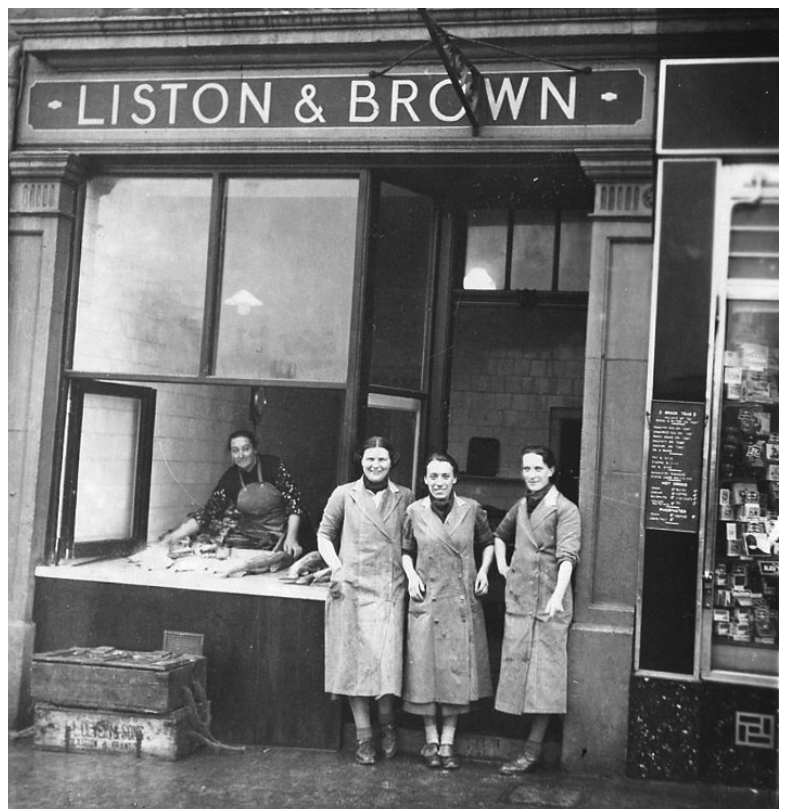
This Working Life



Leith Provident Co-operative Store on Great Junction Street, 1955.

The first St Cuthbert's store was opened in 1859 at the corner of Ponton Street and Fountainbridge. Can you still remember your Store number?

Liston & Brown were a family fishmongers at 67 Slateford Road. Euphemia Liston was one of the last Newhaven fisherwomen to carry a creel to sell her wares. The fish was landed at Newhaven and Euphemia walked all over the city with her creel.





This is a group of newly qualified bus inspectors outside the tram depot in Tollcross Edinburgh. This is now the site of Tollcross Fire Station.

The Forth Road Bridge was constructed by a consortium of three engineering firms; Sir William Arrol & Co, the Cleveland Bridge & Engineering Co, and Dorman Long Ltd, and took the name, The ACD Bridge Company. The bridge was constructed from 1960-64. This picture is from 1962.



Tickets were issued by conductors and conductresses on the tram. They also had to manually detach the overhead trolley at one terminus, swing it round the tram to the other end and re-attach, often with a bright flash from the overhead electric wires. This photo shows conductress A. McGuire.

Mechanics working on a coach at Shrubhill Bus & Tram depot in 1960.



Walter Jamieson was Second Engineer on the SS Southern Opal at the Antarctic, 1957. He worked with Christian Salvesen on whaling expeditions to South Georgia from 1947-61 and then deep-sea fishing in Newfoundland.

This photo was taken on the set of Oklahoma at the King's Theatre. It shows the theatre crew on stage in 1960.





This photo shows a workers and families outing to Glasgow in 1960. Bertrams was an engineering company that manufactured machinery for the papermaking industry. It had a plant, St Katherine's Works, in Sciennes.

The photo below shows a group of Coopers at North British Distillery in 1928.



Workers in the grand hall of the rope works in Leith in 1955.



Do you have memories, stories, or photos you'd like to share? Please get in touch:
comhist@gmail.com
 07714783726
 f livingmemoryassociation



thelmascotland



thelmascotland



The Wee Museum of Memory
 10.30am – 4pm Mon – Fri
 11am – 4pm Sat/Sun
 1st floor, Ocean Terminal.
 We are open to visitors!
www.livingmemory.org.uk