

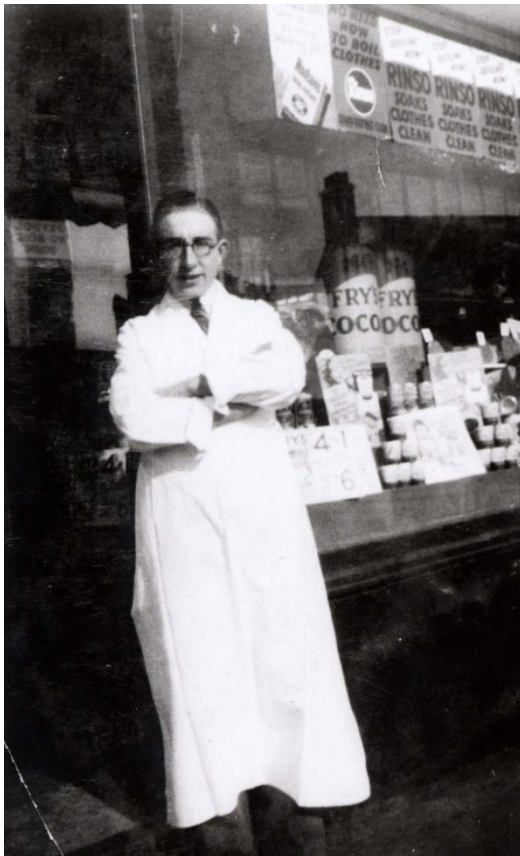


# The Living Memory Association NEWSLETTER



## AWAY FOR THE MESSAGES

Shops & Retail Reminiscence and Heritage Project.



This special edition of our newsletter looks at our new shops and retail project supported by the National Lottery Heritage Fund.

Unless specified, most of the photos shown are donated and uploaded to Edinburgh Collected, a digital photo archive managed by City of Edinburgh Libraries.

This image from the 1940s shows grocer Abraham Noble Chresty outside his shop on West Granton Road, Edinburgh.

‘He used to sell bags of broken biscuits for a penny’ John, one of our volunteers, tells us.



These two smiling chaps are Bill (left) and Arnold Bannerman who ran a butchers shop at 96 Northfield Broadway, Edinburgh. The photo dates from around 1963 and was taken, and donated to us, by Ronnie Dunbar.

Away from the capital, this photo shows Elizabeth Middleton behind the counter of Middleton's bakery in Cowdenbeath, Fife, taken around 1950.

Notice the Swiss roll poking from the shelf on the bottom right-hand corner!



This grocer's shop was situated on Glenogle Road in the Stockbridge area of Edinburgh.

Mabel Linton remembers that: "My father purchased the shop in 1940. It previously traded as the Elmslie (Grocery) Store then traded for approximately 28 years under 'John R Linton'".

The shop is shown here in the 1950s.





St Cuthbert's Association 'Store' staff outside the Piersfield Terrace branch in 1952.

The store manager Jimmy Taylor is pictured on the far right wearing the white overall and glasses.

Jimmy Forbes (91) remembers that: 'Jimmy Taylor was the store manager of the *Sighthill* store when I was the under-manager there. He was an ex-army man and was a great manager to work for.'

This photo of Leith Street, Edinburgh taken in the mid-1960s is one of the most commented in our 'Away for the Messages' project.

Men remember buying their first suit from one of the many men's outfitters that clustered there (note the John Collier tailors on the left – there was also a large Burton's at the top of the street).



Perhaps you shopped at 'The Store's' great rival, Leith Provident.

This 'Provi' shopping bag is from the collection of Edinburgh Museums and Galleries.





June Wesley (née Nisbet) with her father Herbert in the doorway of J. A. Nisbet's China & Glass store on George Street, Edinburgh in 1970.

Nisbet's relocated from here to Rose Street for a short time, and then to George IV Bridge until the mid-1980s.

This department store window display circa 1963 is advertising Gor-Ray fabric garments.

We posted this on our Facebook page and many respondents identified it as Patrick Thomson's which was on North Bridge in Edinburgh.

Our colleague Joyce remembers meeting friends there as teenagers to watch 'The Osmonds' cartoon in the T.V. department!



Do you have shopping memories you'd like to share with us or perhaps you have photographs of Edinburgh's past shops and stores? Get in touch with our project worker, Russell: [comhist@gmail.com](mailto:comhist@gmail.com)



The Wee Museum of Memory, Ocean Terminal, second floor, next to Britannia: [www.livingmemory.org.uk](http://www.livingmemory.org.uk)

Mon – Fri 10.30am – 4.00pm

Sat – Sun 11.00am – 4.00pm