



THE Living Memory Association NEWSLETTER

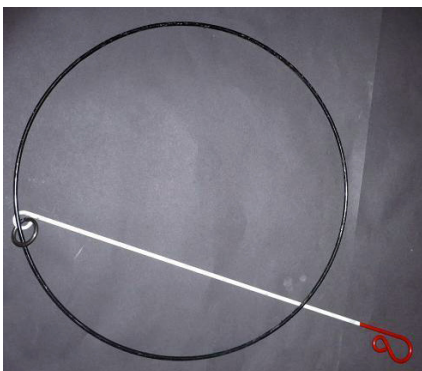
'The games people play.'

Youth club members enjoy taking part in a range of activities including drawing and board games at Greenside Youth Club in 1958.



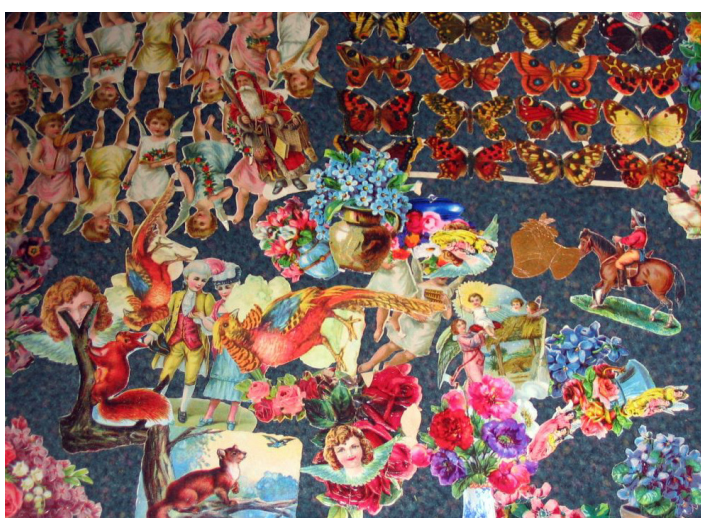
Joan Dougan and her brother Stuart opening their presents on Christmas day 1955.

My Mum, friend and myself going along Jordan Lane, Morningside to get some shopping, though think I was more interested in skipping! This photo is from 1956.

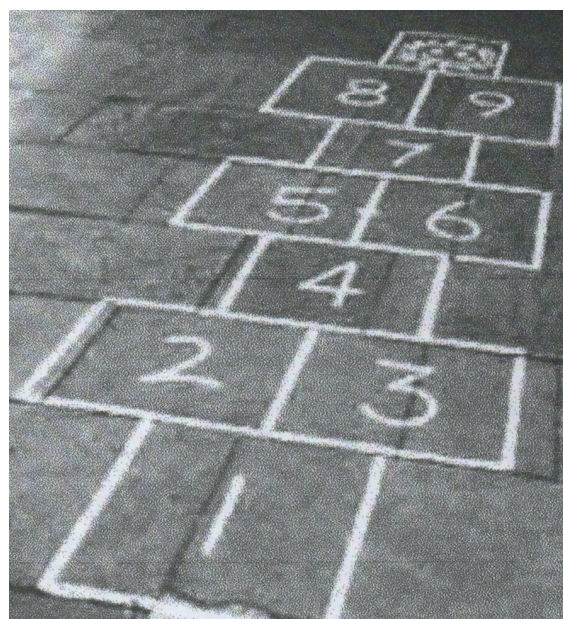


A gird and cleek. Gird is the old Scots word for hoop and cleek is the old Scots word for hook.

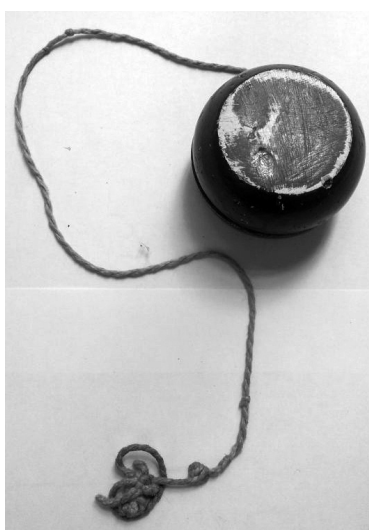
Subbuteo is a tabletop football game developed post second world war. It became very popular in the 1970s. You used a finger to flick the player and move the ball.



I collected scraps in a book and I'd swap some with friends. I had lots of cherubs and angels,' says Mary Dunn.



'We played Peevers on the street. We used an empty shoe polish tin, which we slid along the ground. The object was to slide the tin into one of the numbered squares and you skipped through from one to ten,' says Margaret Lee.



'There used to be yoyo competitions in the Embassy picture house in Boswall Park Way when I was wee in 1953,' says David Crawford.

Did you ever play with a diablo?





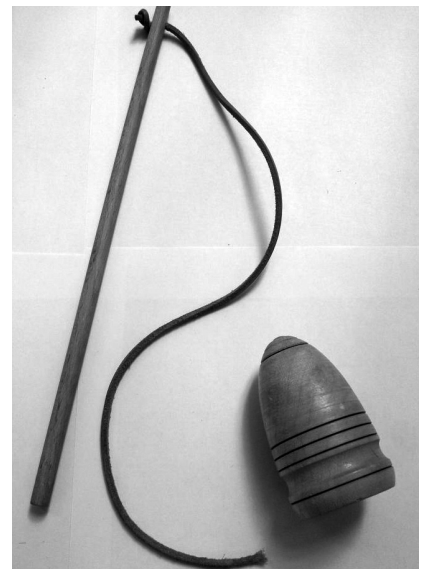
Girl Guides playing badminton while camping in East Lothian in 1934.

A couple
playing draughts
at home in 1955.

What board
games did you
play with the
family?



A boy playing with model train set in back garden in Pentland Terrace in 1930.



Did you ever play with a whip and peerie?



A group of boys are gathered around a computer games console at Oxfangs Library in 1992.



Happy Families was a popular card game.



Do you have memories, stories, or photos you'd like to share?

Please get in touch:

comhist@gmail.com

07714783726

facebook [livingmemoryassociation](#)

instagram [thelmascotland](#)

twitter/X [thelmascotland](#)



Playing billiards in 1925. It used to be seen as a sign of a misspent youth!



The Wee Museum of Memory
10.30am – 4pm Mon – Fri
11am – 4pm Sat/Sun
1st floor, Ocean Terminal.
We are open to visitors.
www.livingmemory.org.uk