



THE Living Memory Association NEWSLETTER

A Quick Look Around Gorgie & Dalry.'



A photo taken by a street photographer. This woman and her son are walking past Cairns Memorial Church, which is now Gorgie Parish Church.



A woman carrying home the messages along Gorgie Road in 1930. This photo was taken by a street photographer.



A dairy shop in Gorgie Road. A presentation of a bunch of flowers to a shopworker in 1945.



Sam Craig in his grocer's shop on Dalry Road in 1955.



A class photo from Gorgie Primary School in 1931. The school would have been on the site of Aldi and McDonalds on Gorgie Road.

Three children leaning against the wall in the back green at 109 Gorgie Road in 1931.



This picture was taken outside Dalry School on 1st September 1939. The children are all ready for evacuation because of the war. They are carrying gas masks in boxes.



Dalry Primary School in the 1950s.

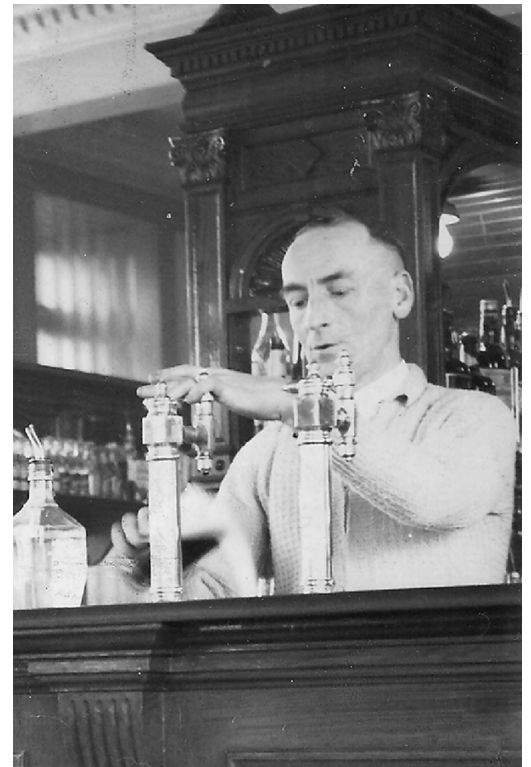
110th Gorgie Cub pack in the 1950s. The photo was taken at Broomhouse primary school.



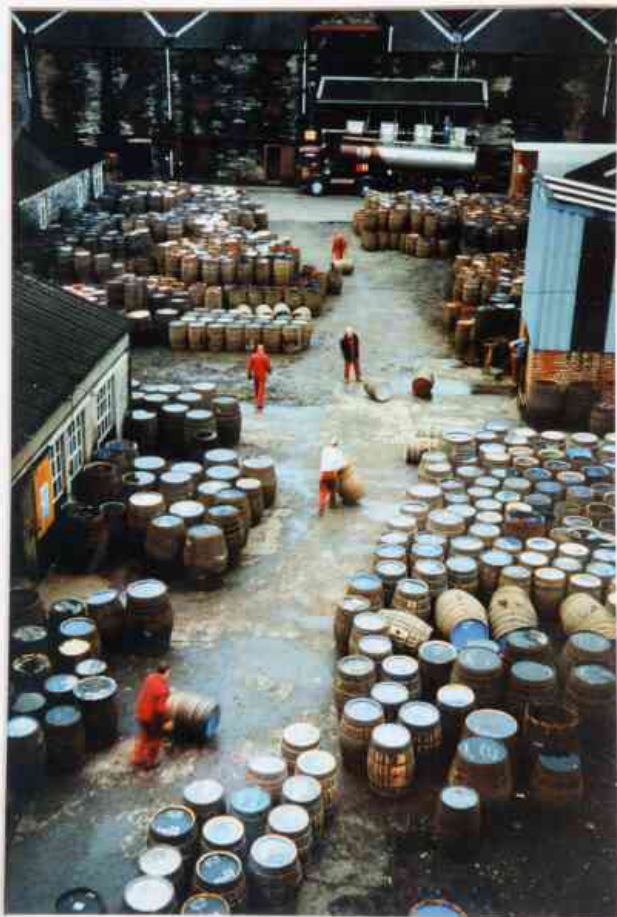
Hearts v Airdrie in 1951. Hearts won the match 3 – 2. Hearts originally played on a pitch on the site of Wardlaw Street from 1881, before moving to their current location on the other side of Gorgie Road in 1886.



The McVitie & Price biscuit factory moved to Robertson Avenue, with some claiming that it was where the digestive biscuit was first created.



Hugh Walker was the bar manager of The Athletic Arms in 1955, also known as The Diggers. It was famous for its pints of McEwans eighty shilling.



The North British Distillery made large quantities of grain whisky for blending. This photograph looks down from the distillery into the cooperage yard. The site also had bonded warehouses, facilities for filling barrels, and a small cooperage.



The staff at Dalry Baths in 1910.



A Coronation Day street party in Newton Street on 2nd June 1953.



Do you have memories, stories, or photos you'd like to share?

Please get in touch:

comhist@gmail.com

07714783726

facebook [livingmemoryassociation](https://www.facebook.com/livingmemoryassociation)

instagram [thelmascotland](https://www.instagram.com/thelmascotland)

twitter/X [thelmascotland](https://twitter.com/thelmascotland)



The Wee Museum of Memory

10.30am – 4pm Mon – Fri

11am – 4pm Sat/Sun

1st floor, Ocean Terminal.

We are open to visitors.

www.livingmemory.org.uk