



# THE Living Memory Association NEWSLETTER

*A Quick Look Around Newhaven.*



A Newhaven picture postcard from 1900.

The photo on the right shows a Newhaven Fishwife's family, Main Street, 1931. Newhaven Fishwives wear distinct clothing which clearly identified them. It consists of multiple layers of shirts, skirts, petticoats and aprons.

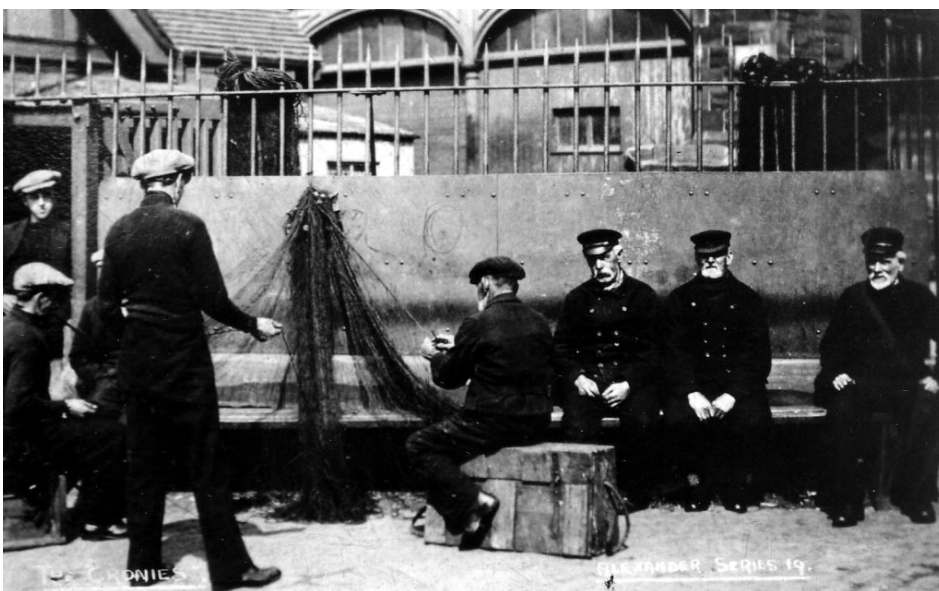


An electric Tramcar travels along Main Street in Newhaven in 1956.



The Gratitude was used every year to bring the Gala Queen into Newhaven harbour. The boat belonged to the Wilson Brothers. This picture shows Maureen Linton who was the Gala Queen in 1955.

A picture postcard of the corner of Stanley Road and Newhaven Road in 1909.



Retired fishermen repairing nets at the top of Newhaven Pier in 1930. Nets were used for catching crabs and lobsters – now pots and creels are used.

Newhaven  
Fishwives Choir in  
1935.

Newhaven fishwives  
would sing songs as  
they walked along  
selling their fish.  
There is a tradition  
of singing which  
can be seen with the  
Newhaven  
Fishwives' Choir.



Barney Battles and the  
Market Buffet on Pier  
Place in 1936.

If you were born in  
Newhaven you were  
known as a Bow-Tow  
and had a bond to the  
fishing village.

Fishermen with their  
catch on board a boat  
in Newhaven harbour  
in 1937.

Newhaven was  
founded in 1488 by  
James III and was  
originally called, Our  
Lady's Port of Grace.





A Newhaven Fishwife in 1935.



Carnie Seaton and his wife Helen Buchan. He was a fisherman and pilot operating in the Forth. The picture was taken outside their house in New Lane, Newhaven.



Trawlers lined up at Newhaven harbour in 1937.

The largest ship to be built in Newhaven was the Great Michael in 1511 for James IV. The ship was known world wide due to its size and guns. It was the largest vessel on the sea.



Do you have memories, stories, or photos you'd like to share?

Please get in touch:

comhist@gmail.com

07714783726

f livingmemoryassociation

thelmascotland

thelmascotland



The Wee Museum of Memory

10.30am – 4pm Mon – Fri

11am – 4pm Sat/Sun

on the 1st floor of Ocean Terminal

[www.livingmemory.org.uk](http://www.livingmemory.org.uk)